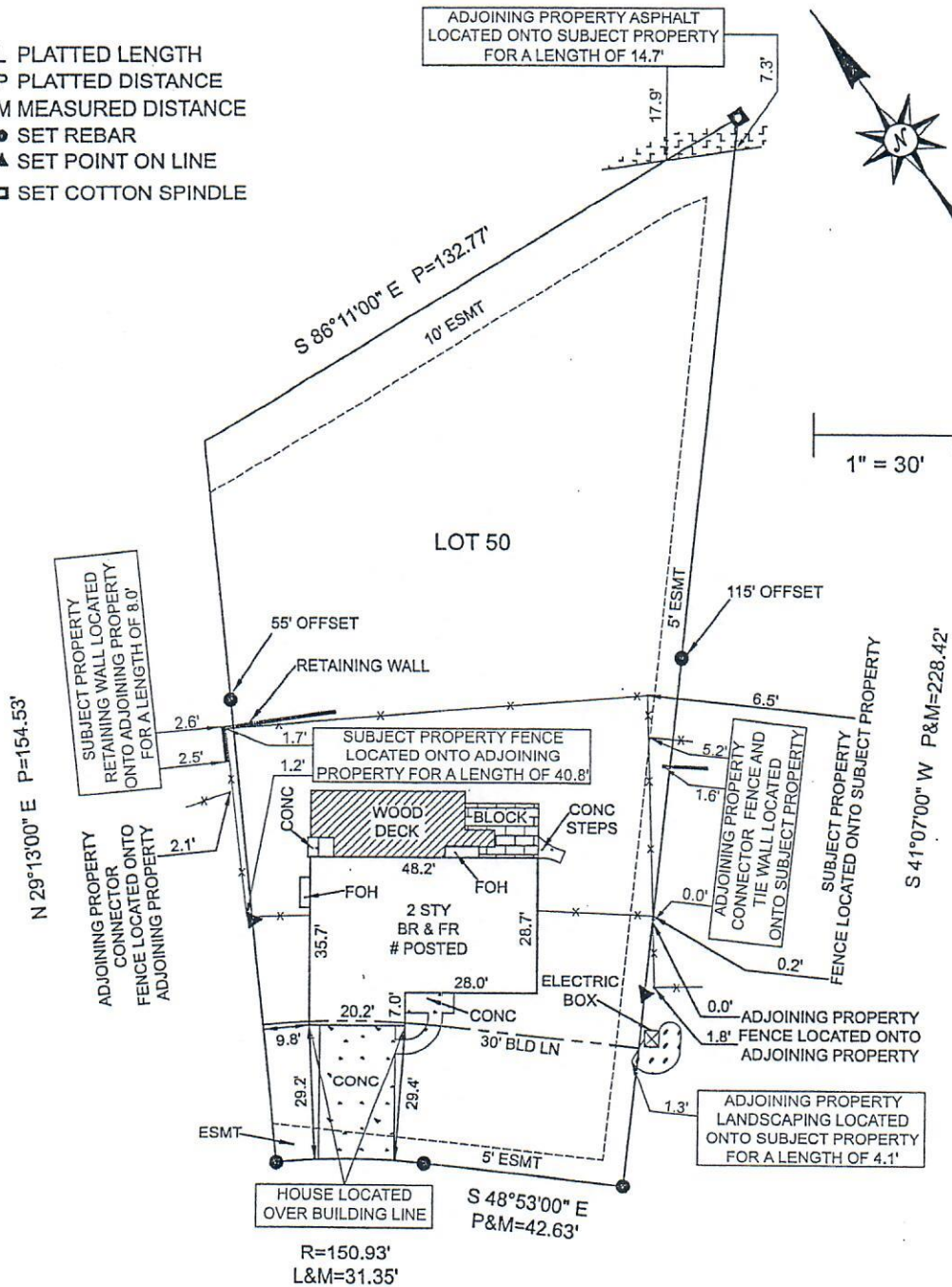


BOUNDARY SURVEY

LOT 50 BASEBALL BAT VILLAGE PLAT TWO



PB 500 PG 50, ST LOUIS COUNTY, MO

- L PLATTED LENGTH
- P PLATTED DISTANCE
- M MEASURED DISTANCE
- SET REBAR
- ▲ SET POINT ON LINE
- SET COTTON SPINDLE



#1 ST LOUIS CARDINALS DRIVE (40' W)

SHEET 1 OF 2

 <p style="text-align: center;"> Cardinal Surveying & Mapping </p> <p style="text-align: center;"> PO BOX 278 COTTLEVILLE, MO 63338 PHONE: 636.922.1001 Corp # 2005000229 www.CardinalSurveying.com </p>	<p style="text-align: center;"> JOB # 1402014 FB 268:41 </p> <p style="text-align: center;"> FIELD WORK BY: CML/WDR DRAWN BY: JLK/AEC </p> <p style="text-align: center;"> REVIEWED BY: WILLIAM JACOB CLARK LS# 2002014101 </p>	<p> This is to certify that on July 4th, 2014 a request by Investors Title Company was made for a Boundary Survey and to locate the improvements on the above named tract and that the results are, to the best of my knowledge, correctly represented on this drawing. </p>	
---	---	--	---